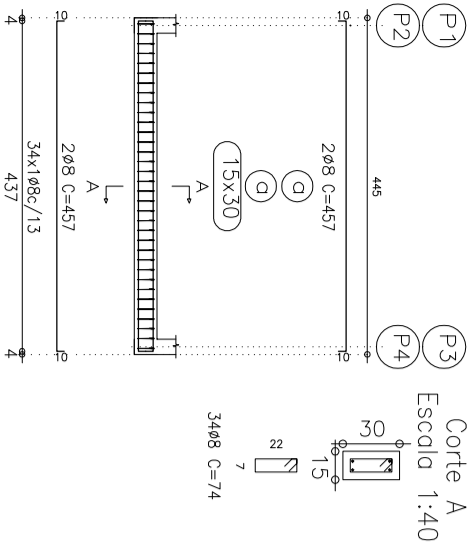
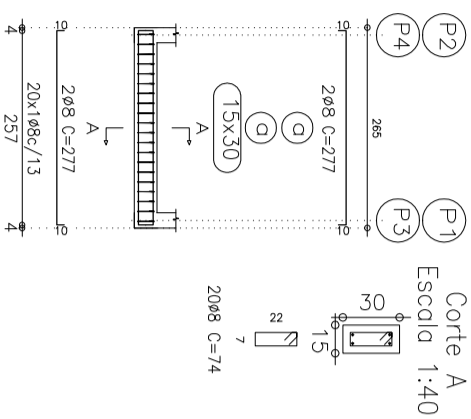


V 1  
V 2  
Escala: 1:100



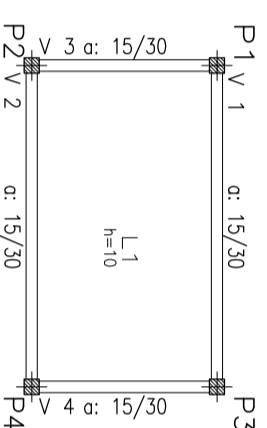
Resumo Aço	Comp. total (m)	Peso+10% (kg)	Total
Térreo Vigas	138,6	60	

V 3  
V 4  
Escala: 1:100



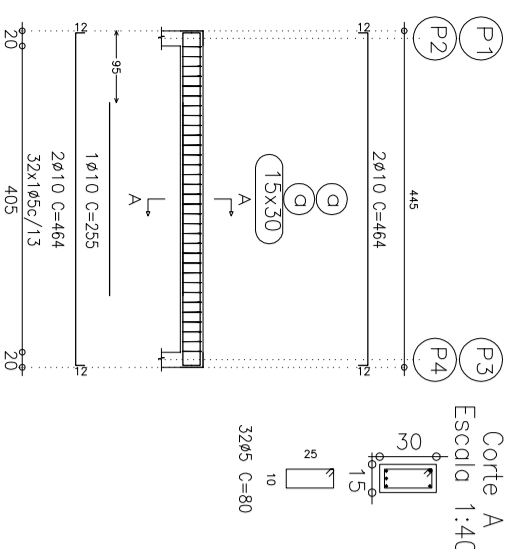
Térreo	Comp. total (m)	Peso+10% (kg)	Total
Formas Concreto: C20, em geral			
Aços em lajes: CA-50-A e CA-60-B			
Escala: 1:100			

Térreo  
Formas  
Concreto: C20, em geral  
Aços em lajes: CA-50-A e CA-60-B  
Escala: 1:100



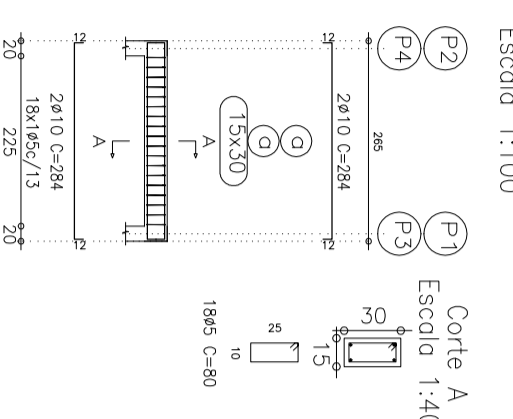
Formas	Comp. total (m)	Peso+10% (kg)	Total
Concreto: C20, em geral			
Aços em lajes: CA-50-A e CA-60-B			
Escala: 1:100			

V 1  
V 2  
Escala: 1:100



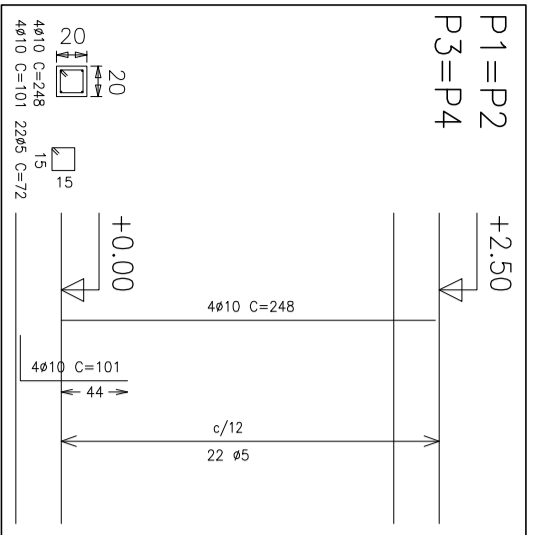
Resumo Aço	Comp. total (m)	Peso+10% (kg)	Total
CA-50-A Ø10	64,9	45	45
CA-60-B Ø5	80,0	14	14
Total			59

V 3  
V 4  
Escala: 1:100



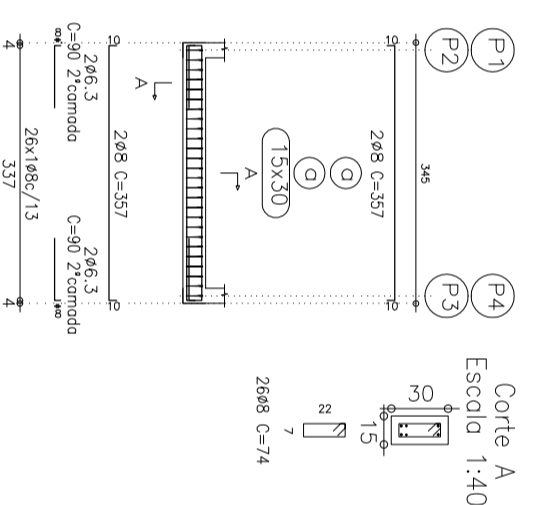
Desenho de vigas	Comp. total (m)	Peso+10% (kg)	Total
Concreto: C20, em geral			
Aço: CA-50-A e CA-60-B			
Escala: 1:100			

Pilares que terminam em Cobertura  
Concreto: C20, em geral  
Aço: CA-50-A e CA-60-B  
Escala: 1:50



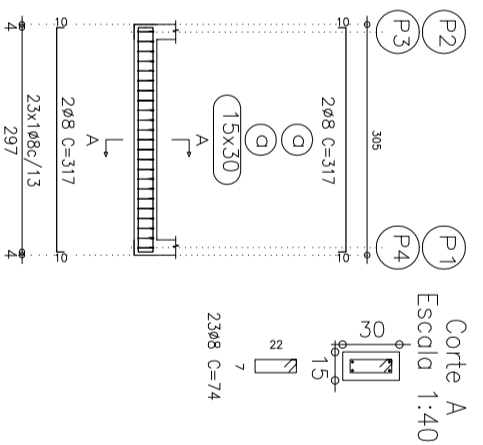
Resumo Aço	Comp. total (m)	Peso+10% (kg)	Total
CA-50-A Ø10	55,8	39	39
CA-60-B Ø5	63,4	11	11
Total			50

V 1  
V 2  
Escala: 1:100



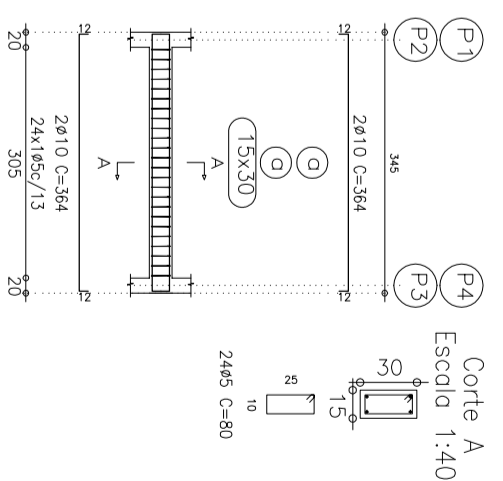
Resumo Aço	Comp. total (m)	Peso+10% (kg)	Total
CA-50-A Ø6,3	7,2	2	2
CA-50-A Ø8	126,4	55	57

V 3  
V 4  
Escala: 1:100



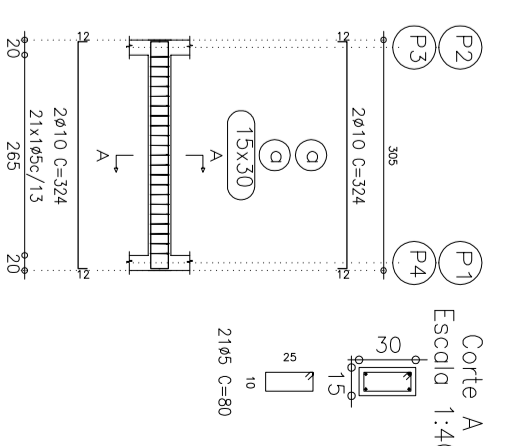
Térreo	Comp. total (m)	Peso+10% (kg)	Total
Formas Concreto: C20, em geral			
Aços em lajes: CA-50-A e CA-60-B			
Escala: 1:100			

V 1  
V 2  
Escala: 1:100



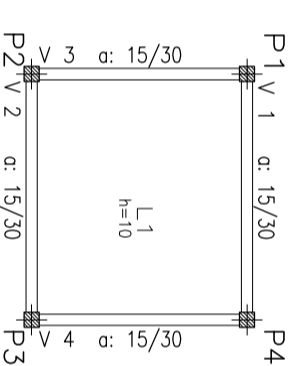
Resumo Aço	Comp. total (m)	Peso+10% (kg)	Total
CA-50-A Ø10	55,0	38	38
CA-60-B Ø5	72,0	12	12
Total			50

V 3  
V 4  
Escala: 1:100

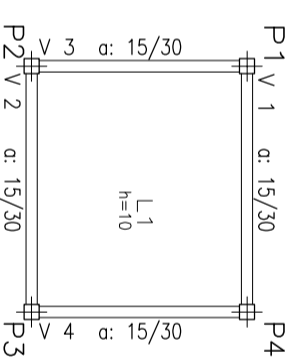


Piso 1	Comp. total (m)	Peso+10% (kg)	Total
Formas Concreto: C20, em geral			
Aço: CA-50-A e CA-60-B			
Escala: 1:100			

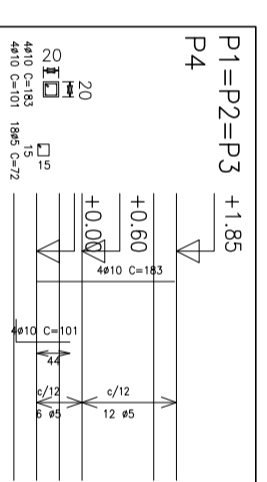
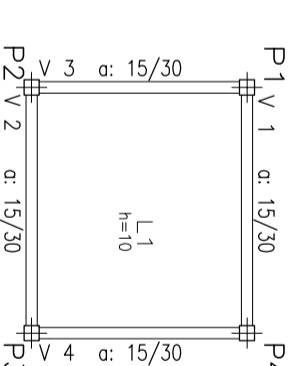
Térreo  
Formas  
Concreto: C20, em geral  
Aços em lajes: CA-50-A e CA-60-B  
Escala: 1:100



Piso 1  
Formas  
Concreto: C20, em geral  
Aços em lajes: CA-50-A e CA-60-B  
Escala: 1:100



Cobertura  
Formas  
Concreto: C20, em geral  
Aços em lajes: CA-50-A e CA-60-B  
Escala: 1:100



Pilares que terminam em Cobertura  
Concreto: C20, em geral  
Aço: CA-50-A e CA-60-B  
Escala: 1:100

Resumo Aço	Comp. total (m)	Peso+10% (kg)	Total
CA-50-A Ø10	45,4	31	31
CA-60-B Ø5	51,8	9	9
Total			40

## PREFEITURA MUNICIPAL DE CANDIOTA

SECRETÁRIO DE OBRAS

PAULO FEIJO

RESPONSÁVEL TÉCNICO

MARCELO VAZ LEAL  
ENGRº CIVIL - CREIA 8578-D

LOCAL  
CONTINUAÇÃO DA RUA ARACY MARTINS

ÁREA

DATA  
OUT/2023

DISSENHO  
PM CANDIOTA

ESPECIFICAÇÃO

ESTRUTURAL FOSSA E FILTRO ANAERÓBIO

ESCALA  
1/100

PRANGIA  
EST-01/01