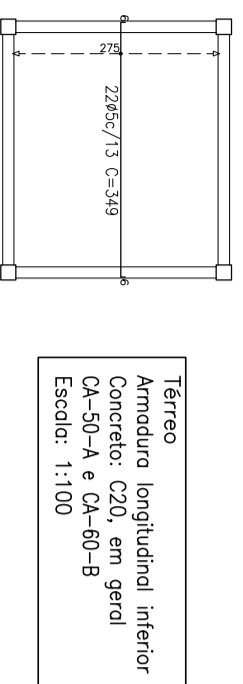
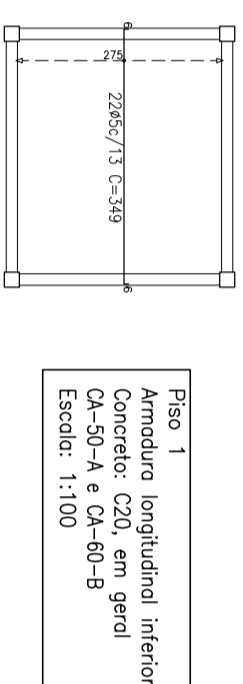


Resumo Aço Térreo Armadura longitudinal inferior CA-60-B	Comp. total (m)	Peso+10% (kg)
Ø5	76,8	13



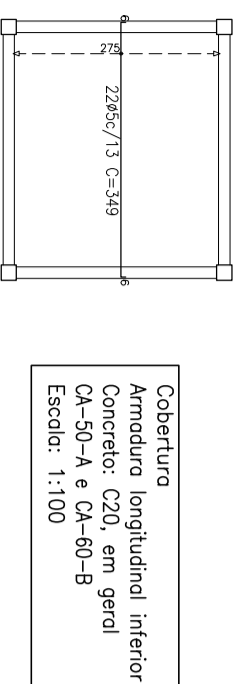
Térreo  
Armadura longitudinal inferior  
Concreto: C20, em geral  
CA-50-A e CA-60-B  
Escala: 1:100

Resumo Aço Piso 1 Armadura longitudinal inferior CA-60-B	Comp. total (m)	Peso+10% (kg)
Ø5	76,8	13



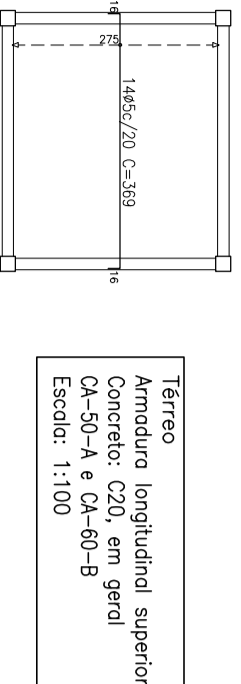
Piso 1  
Armadura longitudinal inferior  
Concreto: C20, em geral  
CA-50-A e CA-60-B  
Escala: 1:100

Resumo Aço Cobertura Armadura longitudinal inferior CA-60-B	Comp. total (m)	Peso+10% (kg)
Ø5	76,8	13



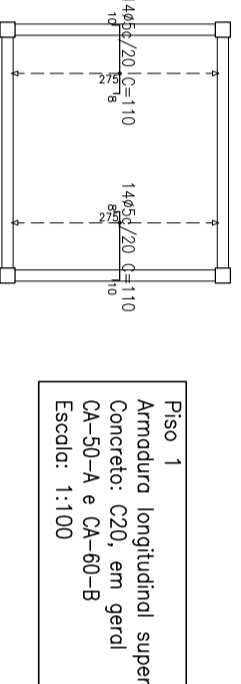
Cobertura  
Armadura longitudinal inferior  
Concreto: C20, em geral  
CA-50-A e CA-60-B  
Escala: 1:100

Resumo Aço Térreo Armadura longitudinal superior CA-60-B	Comp. total (m)	Peso+10% (kg)
Ø5	51,7	9



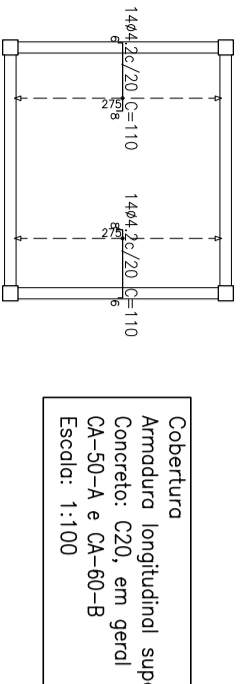
Térreo  
Armadura longitudinal superior  
Concreto: C20, em geral  
CA-50-A e CA-60-B  
Escala: 1:100

Resumo Aço Piso 1 Armadura longitudinal superior CA-60-B	Comp. total (m)	Peso+10% (kg)
Ø5	30,8	5



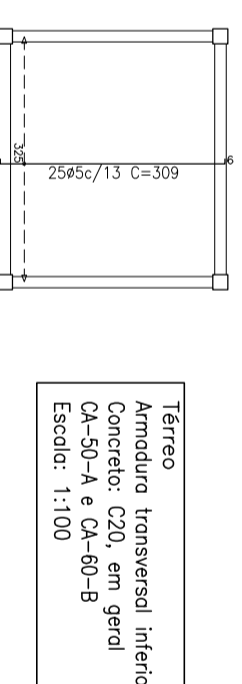
Piso 1  
Armadura longitudinal superior  
Concreto: C20, em geral  
CA-50-A e CA-60-B  
Escala: 1:100

Resumo Aço Cobertura Armadura longitudinal superior CA-60-B	Comp. total (m)	Peso+10% (kg)
Ø4,2	30,8	4



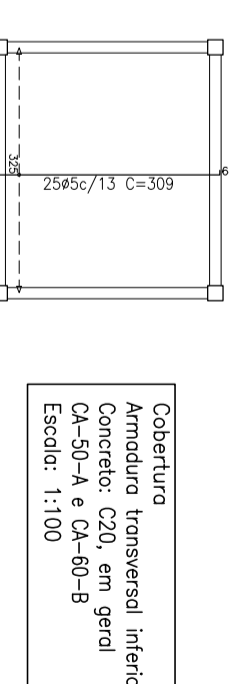
Cobertura  
Armadura longitudinal superior  
Concreto: C20, em geral  
CA-50-A e CA-60-B  
Escala: 1:100

Resumo Aço Térreo Armadura transversal inferior CA-60-B	Comp. total (m)	Peso+10% (kg)
Ø5	77,3	13



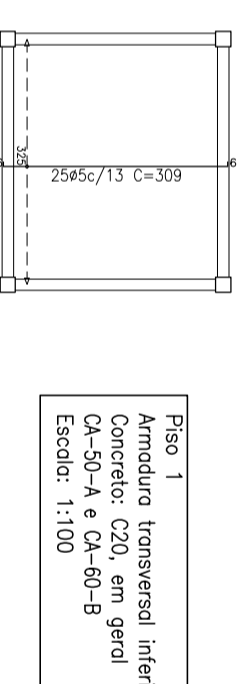
Térreo  
Armadura transversal inferior  
Concreto: C20, em geral  
CA-50-A e CA-60-B  
Escala: 1:100

Resumo Aço Cobertura Armadura transversal inferior CA-60-B	Comp. total (m)	Peso+10% (kg)
Ø5	77,3	13



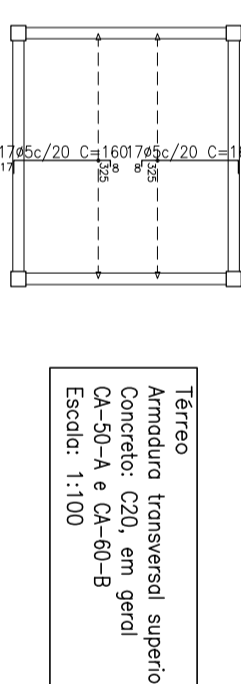
Cobertura  
Armadura transversal inferior  
Concreto: C20, em geral  
CA-50-A e CA-60-B  
Escala: 1:100

Resumo Aço Piso 1 Armadura transversal inferior CA-60-B	Comp. total (m)	Peso+10% (kg)
Ø5	77,3	13



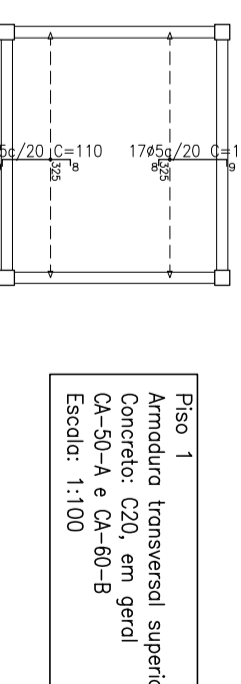
Piso 1  
Armadura transversal inferior  
Concreto: C20, em geral  
CA-50-A e CA-60-B  
Escala: 1:100

Resumo Aço Térreo Armadura transversal superior CA-60-B	Comp. total (m)	Peso+10% (kg)
Ø5	54,4	9



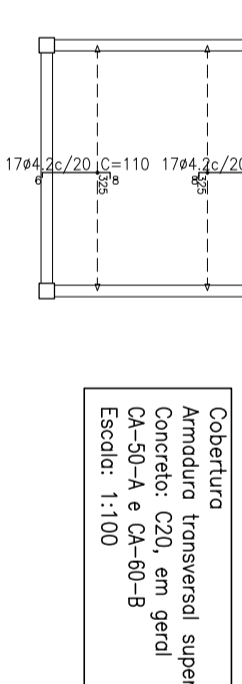
Térreo  
Armadura transversal superior  
Concreto: C20, em geral  
CA-50-A e CA-60-B  
Escala: 1:100

Resumo Aço Piso 1 Armadura transversal superior CA-60-B	Comp. total (m)	Peso+10% (kg)
Ø5	37,4	6



Piso 1  
Armadura transversal superior  
Concreto: C20, em geral  
CA-50-A e CA-60-B  
Escala: 1:100

Resumo Aço Cobertura Armadura transversal superior CA-60-B	Comp. total (m)	Peso+10% (kg)
Ø4,2	37,4	4



Cobertura  
Armadura transversal superior  
Concreto: C20, em geral  
CA-50-A e CA-60-B  
Escala: 1:100

## PREFEITURA MUNICIPAL DE CANDIOTA

SECRETÁRIO DE OBRAS

PAULO FEIJÓ

RESPONSÁVEL TÉCNICO

MARCELO VAZ LEAL  
ENGR. CIVIL - CREIA 85378-D

LOCAL  
CONTINUAÇÃO DA RUA ARACY MARTINS

ÁREA

DATA  
OUT/2023

DESENHO  
PM CANDIOTA

ESPECIFICAÇÃO

ESTRUTURAL FOSSA E FILTRO ANAERÓBIO

ESCALA  
1/100

PRANGHA  
EST-01/02